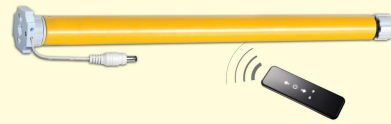


AM25 Low Power Tubular Motor User Manual

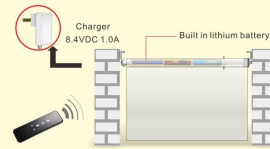


Main features

1. Power saving patented design.
2. Built-in rechargeable lithium battery.
3. Automatically correct the displacement caused by braking
4. Control board is sealed by plastic box, greater safety.
5. Easy to convert the jog mode and continuous mode as well as to change the movement direction.
6. Multiple 6 limits setting (Including one Upper/Lower limit and 4 additional limit positions)
7. Open or short circuit protection for sensor.
8. Built-in power saving Zigbee module. Operate blinds by APP.

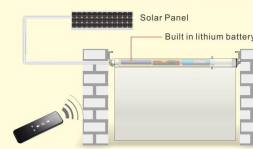
Applications

Application 1: Lithium Battery Power



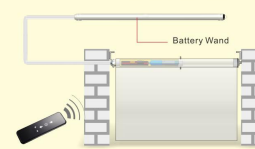
Please take out the Battery charger after fully charged in 4 hours.

Application 2: Solar Panel Power



In sunny day, it takes 2 days to be filled with electricity.

Application 3: Battery wand Power

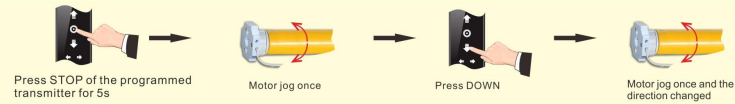


III. Operation

1. Programming

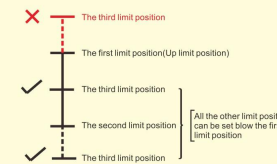


2. Change direction

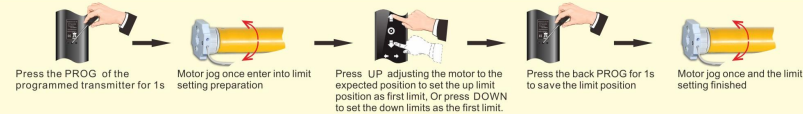


3. Limit position setting

- Maximum six different limit positions can be set, the furthest two positions called the UP and DOWN limit position, others called the middle limit positions;
- When the first limit position is the UP limit position (as right illustration), all other limit positions can only be set below this position; the same thing, when the first limit position is the DOWN limit position, all other limit positions can only be set above this position;
- Every limit position can be fine-tuned or deleted separately (The first limit position can only be fine-tuned but can't be deleted separately. It can be deleted when delete all memories);
- The motor stops at the next limit position after accepting once UP/DOWN order. When it reaches the UP limit position, the UP order is no use any more; when it reaches the DOWN limit position, the DOWN order is no use;
- Press the UP/DOWN button twice on the transmitter at the speed of once a second, motor will go directly to the UP/DOWN limit position without any stop at the middle limit.



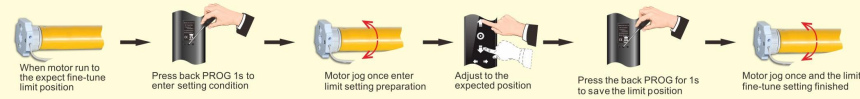
4. First limit position setting (If there's no any action within 30's, the motor will exit from limit position preparation automatically)



5. Other limit position setting * (If there's no any action within 30's, the motor will exit from limit position preparation automatically)



6. Limit position fine-tuning *(If there's no any action within 30 s , the motor will exit from limit position preparation automatically)



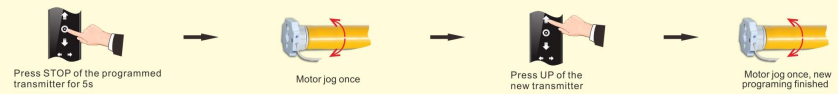
7. Delete the limit position *(The first limit position can't be deleted)



8. Dot move and continuous move conversion



9. Add the new transmitter



10. Delete single channel memory



11. Delete all the memories * After deleting all codes, the motor will be restored to factory setting.



12. Power ON/OFF function * After power OFF motor does not react at remote signals.

